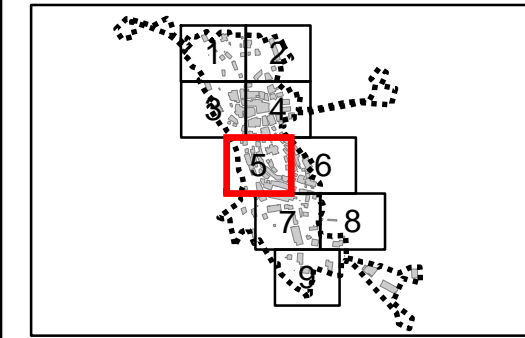
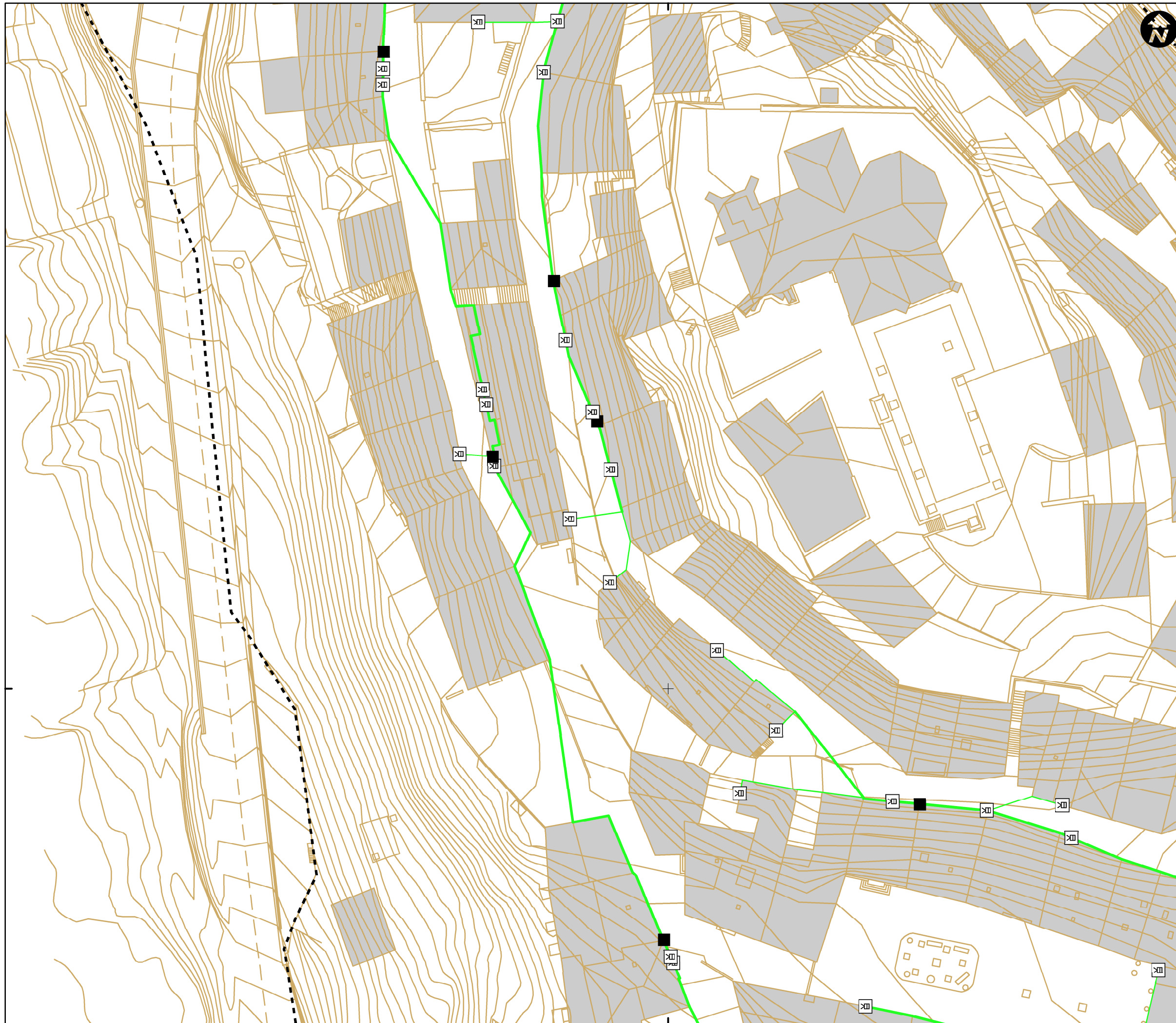








530800







Mapa de referencia / Erreferentzi mapa

DESCRIPCION / DESKRIBAPENA

-  ELEMENTO DE RED DESCONOCIDO_COM
-  NTE IAT 10 ACOMETIDA
-  NTE IAT 15 ARMARIO
-  NTE IAT 20 ARQUETA DE TELECOMUNICACIONES
-  POSTE
-  TORRE

TIPO / MOTA

-  ACOMETIDA, AEREA
-  ACOMETIDA, SUBTERRANEA
-  RED GENERAL, AEREA
-  RED GENERAL, SUBTERRANEA

--- LIMITE CASCO URBANO

INVENTARIO DE REDES DE SERVICIO DEL MUNICIPIO DE NAVARIDAS (2016)

Nº 5 - MAPA DE LA RED DE TELECOMUNICACIONES DE NAVARIDAS

ESCALA 1:500 ESKALA



Sistema de referencia ETRS89.
Proyección UTM. Huso 30 norte

MARZO 2017

Arabako Foru Aldundia
Diputación Foral de Álava

estudios **gis**
Sistemas de Información Geográfica

4710300

4710300

530800