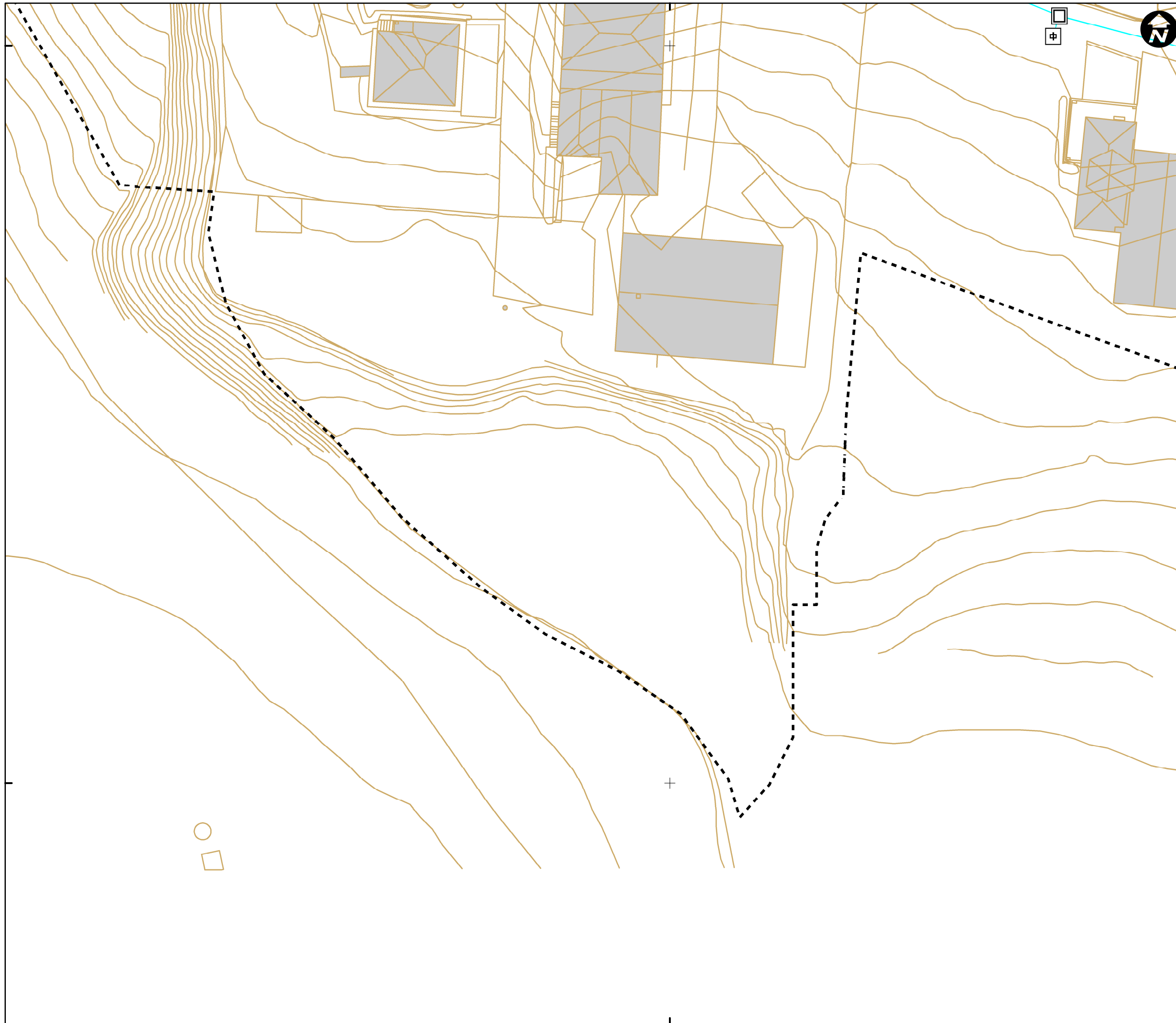
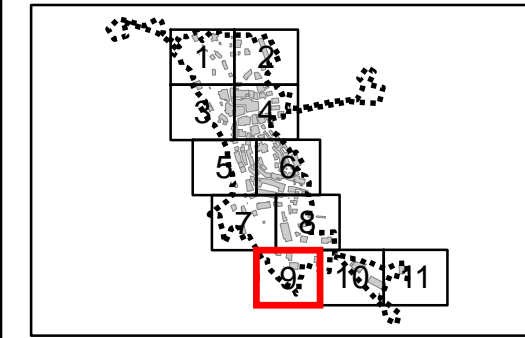


530900

4710100

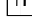










4710100





Mapa de referencia / Erreferentzi mapa

DESCRIPCION / DESKRIBAPENA

-  ARMARIO
-  ELEMENTO DE RED DESCONOCIDO_ALU
-  NTE IEE 10 PUNTO DE LUZ SOBRE BACULO
-  NTE IEE 11 PUNTO DE LUZ SOBRE POSTE
-  NTE IER 20 ARQUETA DE ALUMBRADO
-  POSTE
-  PUNTO DE LUZ
-  PUNTO DE LUZ EMPOTRADO
-  PUNTO DE LUZ SOBRE BRAZO EN FACHADA

TIPO / MOTA

-  AEREA
-  SUBTERRANEA

- - - LIMITE CASCO URBANO

INVENTARIO DE REDES DE SERVICIO DEL MUNICIPIO DE NAVARIDAS (2016)

Nº 9 - MAPA DE LA RED DE ALUMBRADO DE NAVARIDAS

ESCALA 1:500 ESKALA



Sistema de referencia ETRS89. Proyección UTM. Huso 30 norte

MARZO 2017

Arabako Foru Aldundia
Diputación Foral de Álava

estudios
gis
Sistemas de Información Geográfica

530900

4710000

4710000