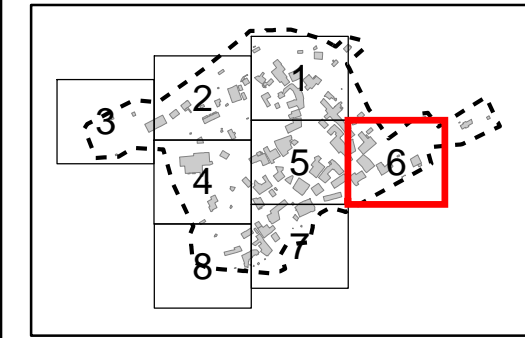
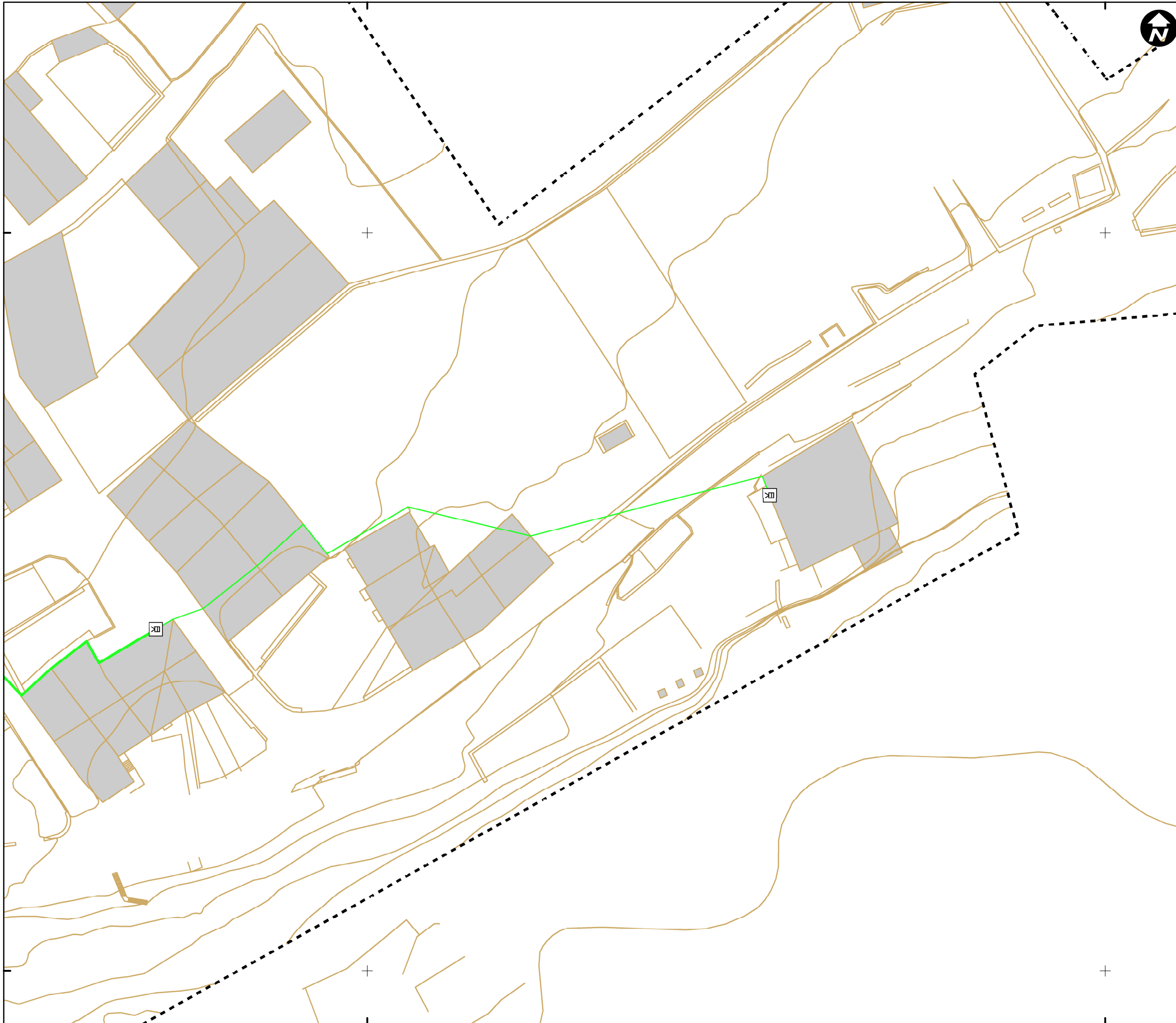








535800

535900

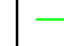





Mapa de referencia / Erreferentzi mapa

DESCRIPCION / DESKRIBAPENA

-  ELEMENTO DE RED DESCONOCIDO_COM
-  NTE IAT 10 ACOMETIDA
-  NTE IAT 12 ARMARIO
-  NTE IAT 20 ARQUETA DE TELECOMUNICACIONES
-  POSTE
-  TORRE

TIPO / MOTA

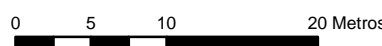
-  ACOMETIDA, AEREA
-  ACOMETIDA, SUBTERRANEA
-  RED GENERAL, AEREA
-  RED GENERAL, SUBTERRANEA

- - - LIMITE CASCO URBANO

INVENTARIO DE REDES DE SERVICIO DE LOS NÚCLEOS DEL AYUNTAMIENTO DE BERNEDO (2015)

Nº 6 - MAPA DE LA RED DE TELECOMUNICACIONES DEL NÚCLEO DE MARKINEZ

ESCALA 1:500 ESKALA



Sistema de referencia ETRS89.
Proyección UTM. Huso 30 norte

MARZO 2017



Arabako Foru Aldundia
Diputación Foral de Álava

estudios **gis**
Sistemas de Información Geográfica

4727900

4727900

4727800

4727800

535800

535900