

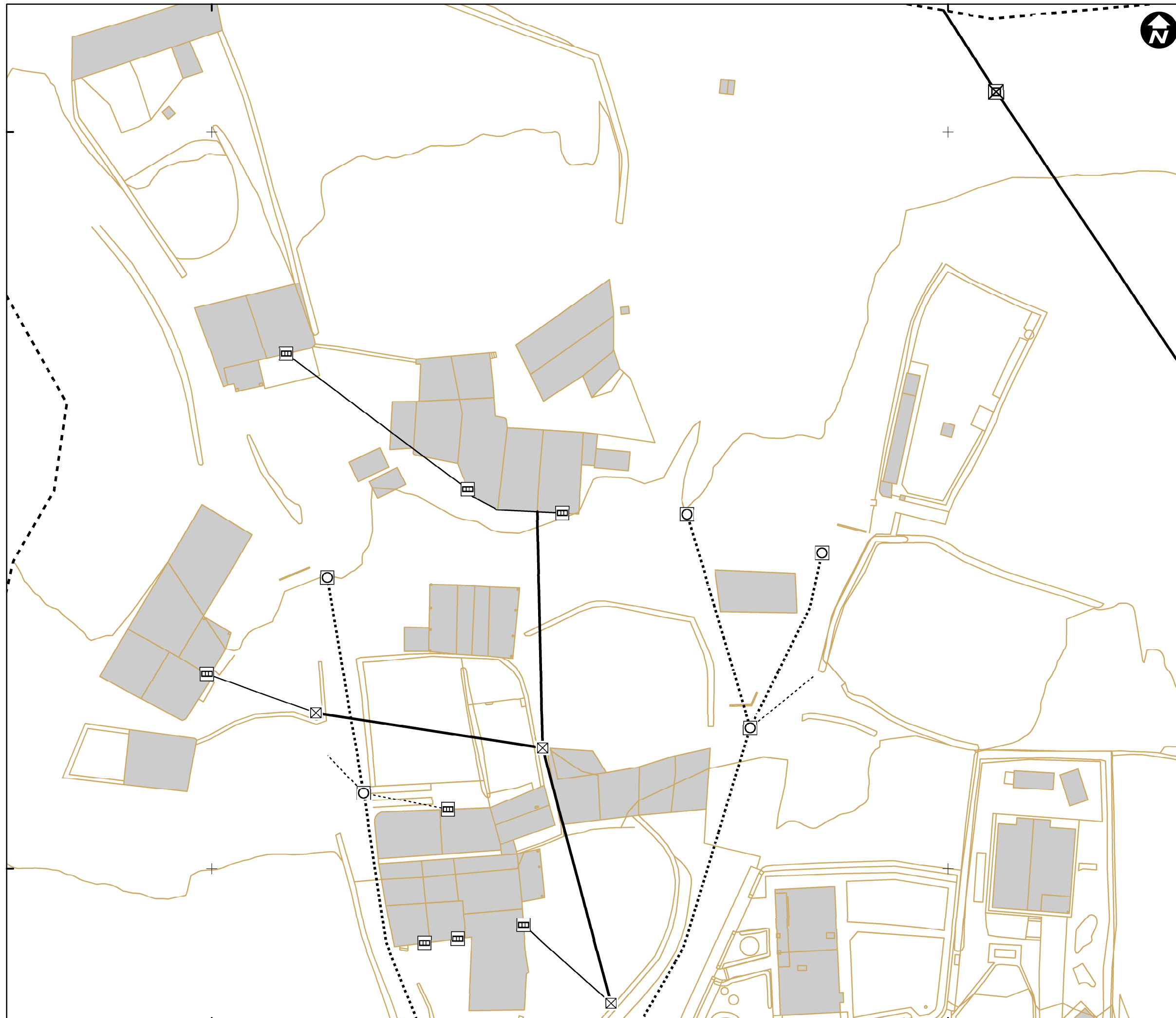
538900

539000



4720800

4720800

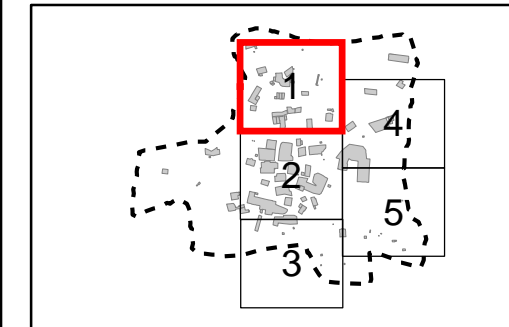


4720700

4720700








538900

539000







Mapa de referencia / Erreferentzi mapa

**DESCRIPCION / DESKRIBAPENA**

-  CENTRAL ELECTRICA
-  CENTRO DE TRANSFORMACION
-  ELEMENTO DE RED DESCONOCIDO\_ELE
-  NTE IER 20 ARQUETA DE REGISTRO
-  NTE IER 21 ARMARIO DE ACOMETIDA
-  POSTE
-  TORRE

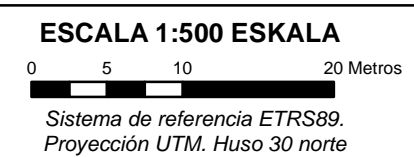
**TIPO / MOTA**

-  ACOMETIDA, AEREA
-  ACOMETIDA, SUBTERRANEA
-  RED GENERAL, AEREA
-  RED GENERAL, SUBTERRANEA

- - - LIMITE CASCO URBANO

**INVENTARIO DE REDES DE SERVICIO DE LOS NÚCLEOS DEL AYUNTAMIENTO DE BERNEDO (2015)**

**Nº 1 - MAPA DE LA RED ELÉCTRICA DEL NÚCLEO DE NAVARRETE**



**MARZO 2017**



Arabako Foru Aldundia  
Diputación Foral de Álava



estudios  
**gis**  
Sistemas de Información Geográfica