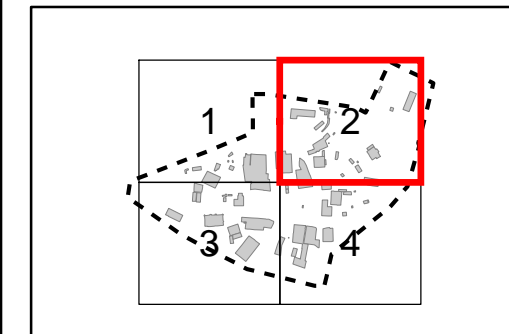
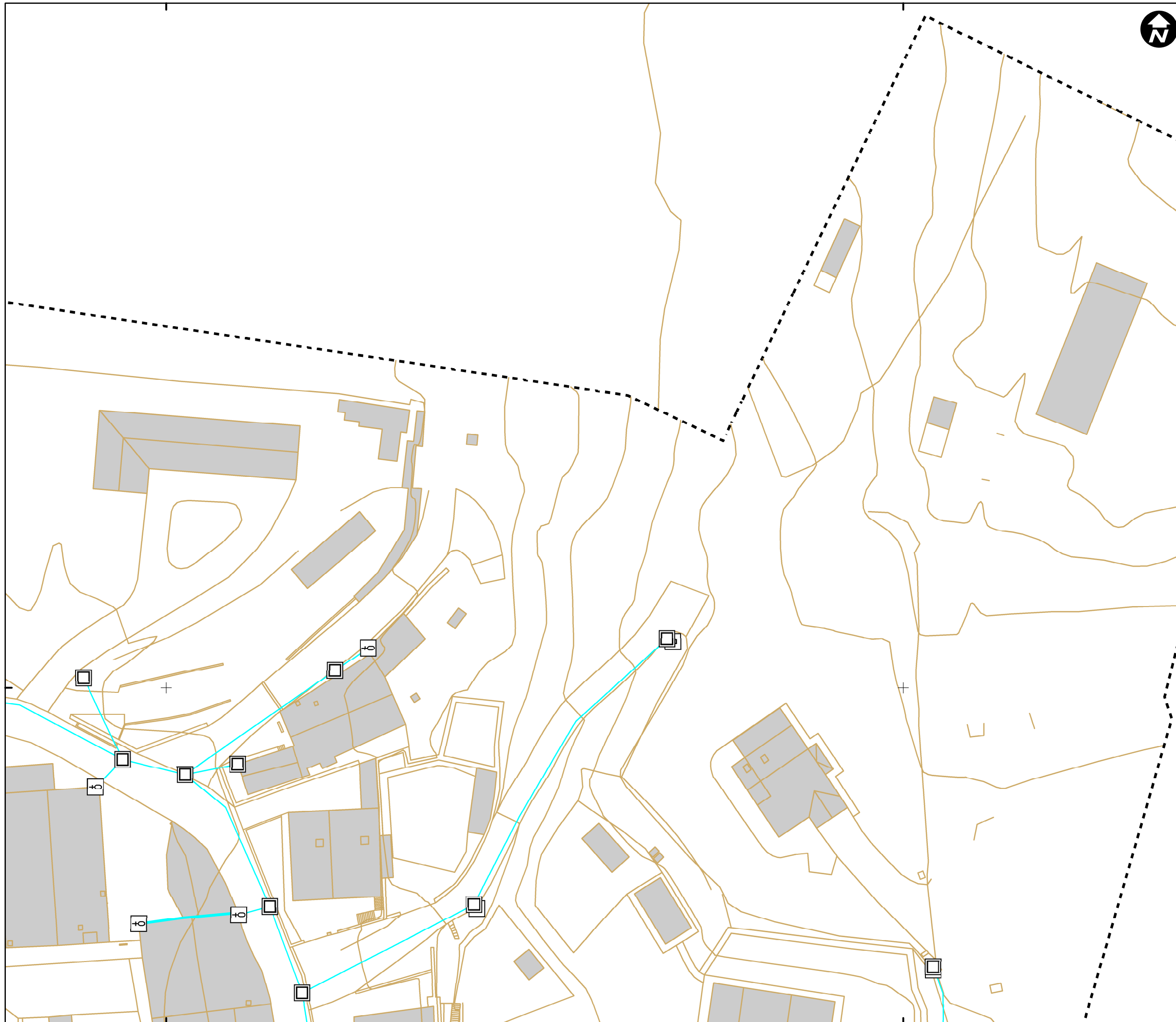




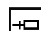
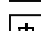





533800

533900





Mapa de referencia / Erreferentzi mapa

DESCRIPCION / DESKRIBAPENA

-  CUADRO DE MANDO
-  ELEMENTO DE RED DESCONOCIDO_ALU
-  NTE IEE 10 PUNTO DE LUZ SOBRE BACULO
-  NTE IEE 11 PUNTO DE LUZ SOBRE POSTE
-  NTE IER 20 ARQUETA DE ALUMBRADO
-  POSTE
-  PUNTO DE LUZ
-  PUNTO DE LUZ EMPOTRADO
-  PUNTO DE LUZ SOBRE BRAZO EN FACHADA

TIPO / MOTA

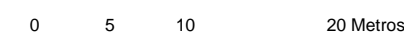
-  AEREA
-  SUBTERRANEA

--- LIMITE CASCO URBANO

INVENTARIO DE REDES DE SERVICIO DE LOS NÚCLEOS DEL AYUNTAMIENTO DE BERNEDO (2015)

Nº2 - MAPA DE LA RED DE ALUMBRADO DEL NÚCLEO DE OKINA

ESCALA 1:500 ESKALA



Sistema de referencia ETRS89.
Proyección UTM. Huso 30 norte

MARZO 2017



533800

533900

4734600

4734600