

Almost without knowing it,

EUROPE

HAS BEEN HERE

Over the last 16 years, Europe has been here, in Álava, through its presence in multiple projects. Europe has helped you to set up your business, it's made it easier for you to access

technology, it's improved the network of roads you use to go to work, it's conserved our habitat so that you can enjoy nature in your free time, etc. Take a look at how close it has come to you.

2000
2016
PROJECTS



European Union



Arabako Foru Aldundia
Diputación Foral de Álava



INDEX

- 4 | Support to innovation and to the creation of businesses
Business promotion activities
- 5 | Transnational cooperation in the Atlantic Area
- 6 | Cultural infrastructure
- 7 | Protection and regrowth of natural spaces
Reconditioning of green ways
- 8 | Road infrastructure
- 9 | Waste management
Water sanitation
- 10 | Programmes to support the environment and take action against climate change
Cross-border cooperation
- 11 | Support in adapting to new technologies
Telematic classrooms: technological training in the rural world
- 12 | Support for the training of workers and of the unemployed members of the population
Social/occupational integration of individuals with disabilities and those at risk of social exclusion
- 13 | Europe Direct Álava: European information office



European Affairs Service.
Álava County Council.



Europe has been here. It's been very close to you; perhaps without you even knowing it. In your daily life, in your walks through the city, in your search for a new job, in your new technology, in the creation of your company, in your free time in nature.

Álava County Council was the entity managing the more than **65 million** euros which came from the European Union (not counting agricultural funds) from 2000 to 2016 through multiple initiatives in Álava.

Here, we aim to list some of the most representative projects.

The European Union is an economic and political association that has multiple financial instruments to support the economic development of its regions. Large funds include the European Regional Development Fund (ERDF), The European Social Fund (ESF), the Cohesion Fund and the European Agricultural Fund for Rural Development (EAFRD), as well as the Community Programmes and Initiatives to contribute to European growth and cohesion.

When you decided to start something new, innovate and create your own company



ERDF

Support to innovation and to the creation of businesses

- ◇ Supporting you when improving your business's competitiveness through aid programmes for innovative projects that believe in and take risks.
- ◇ Accompanying you throughout the adventure of starting something new and building your business.
- ◇ Valuing your new, innovative ideas that have growth potential and contribute to diversifying business activities.

Promeco, Pronue, Saiatu, Ausartu, Álava Innova and Emprender en Álava programmes.

ESF

In conjunction with Álava County Council, with cooperation from Ajebask - The Álava Young Businessperson Association, AMPEA - The Association of Professional Women and Businesswomen of Álava, SEA -Businesspersons from Álava, as well as the Chamber of Commerce and Industry of Álava.

Business promotion activities

- ◇ Intensifying your vocation to do business by promoting your project and encouraging you to create your own job.
- ◇ Helping you to take the leap to internationalisation and business innovation.

When you started to discover your territory



During the visit that you made to the Añana Salt Valley, one of our touristic icons

INTERREG

Transnational cooperation in the Atlantic Area

- ◇ Valuing what we have and establishing relationships with other Atlantic saltworks.
- ◇ Joining forces with European partners to offer opportunities to the local population and promote the Añana Salt Valley.



SAL project
"Salt of the Atlantic: Revalorization of the identity of the Atlantic saltworks"

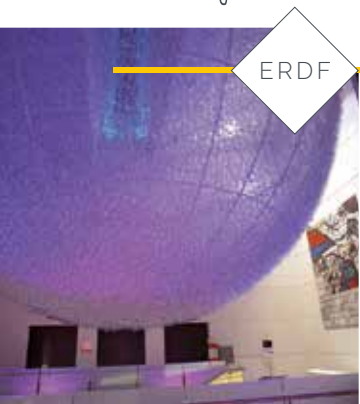
ECOSAL ATLANTIS project
"Ecotourism in saltworks of the Atlantic: a strategy for integral and sustainable development".





When you are out enjoying the Artium and Santa Maria Cathedral

In bike rides or on foot



ERDF

Cultural infrastructure

- ◇ Construction of the Basque Museum – Centre of Contemporary Art (Artium) so that you can enjoy a space for exhibitions and cultural events near where you live. Likewise, this space acts as yet another reason for people to visit us.
- ◇ Holding up the pillars of Santa Maria Cathedral through restoration projects. Restoring the religious temple and recovering its history to give the Cathedral and its surroundings new life.



ERDF

Protection and regrowth of natural spaces

- ◇ Protecting the wide variety of life that inhabits the shores of our reservoirs at the Zadorra River so that the ride is unforgettable.
- ◇ Restoring the old El Torco Quarry and the forests of our hills which are in risk of eroding (both in the centre and south of Álava) so that walking in nature, sitting down under a tree and getting lost in your surroundings don't become things of the past.



ERDF

Reconditioning of green ways

- ◇ Pedalling over comfortable paths throughout Álava which were designed to travel by bike or on foot and are both sustainable and respectful with the environment. Discovering, at the same time, the natural, cultural and landscape richness that we have.
- ◇ Contributing to the touristic promotion of our territory by undertaking activities which are low in emissions and by promoting sustainable means of transport.

Nervión Linear Park.
The old Basque/Navarre
Railway line (Green way).

On the way
to work and
to your house



When you drop
off your trash and
put into motion the
recycling process



ERDF

Road infrastructure

- ◇ Reconditioning of the stretches of highways that belong to Álava and connect you to your house, to work and to social gatherings with your friends and your family.
 - ◇ Reconditioning of Route N-102.
 - ◇ Link between Vitoria-Gasteiz and the Jündiz and Gojain Industrial Parks.
 - ◇ Improvements to Route N-240, the Gamarra – Miñano Mayor stretch (Álava's Technology Park) and the construction of a bypass at Miñano Mayor.



ERDF

Waste management

- ◇ Promoting and stimulating recycling through infrastructure that helps us to become even more ecological. Managing the urban waste produced in Vitoria-Gasteiz at two new plants located in Jündiz: a waste composting plant and a recyclable packaging classifying plant. In this way, we better take advantage of organic waste and we classify the components that make up the light packaging that we throw away in the yellow bin.



COHESION

Living in a healthy environment

ERDF

Water sanitation

- ◇ Installing waste water collection and treatment systems at Rioja Alavesa (Laguardia, Elciego, Elvillar, Lanciego, Navaridas, Leza and Lapuebla de Labarca), Araia, Bernedo and Iruña de Oca to comply with the Directive and so that our industry, farms, livestock, as well as all of us contribute to a cleaner environment.



COHESION



When you tell your friends that you are living in a "green" territory



When you decided it was the time to jump on board with new technologies



LIFE
LIFE+

Programmes to support the environment and take action against climate change

- ◇ Cooperating to conserve our status as a "green" territory, watching out for our minks, eagles, wetlands, oak forests, etc.
 - ◇ The LUTREOLA SPAIN and LIFE BONELLI Projects to conserve and recover endangered species.
 - ◇ The PRO-IZKI Project to manage the Oak, its habitats and its species.
 - ◇ TREMEDAL Project to manage and restore continental wetlands in the north of the Peninsula.



INTERREG

Cross-border cooperation

- ◇ Making possible, thanks to the POCTEFA Programme, cooperative efforts to conserve the biodiversity in mountainous areas of the borders between Spain, France and Andorra.

The GALLIPYR, NECROPIR and ECOGYR Projects, which are aimed at protecting galliformes (gamebirds) and carrion-eating birds of prey, as well as their habitats.

10

ESF

Support in adapting to new technologies

- ◇ Responding to your questions about technology and assisting you with innovative solutions so that you can adapt to the new ways of understanding our technological society. Large companies, unions, NGOs, educational centres, innovation centres and public institutions have participated, along with European partners.



Adapt@
Transnational Project.

ESF

Telematic classrooms: technological training in the rural world

- ◇ Establishing a telematic classroom in your rural community (at as many as 25 points in Álava) in which you can learn about telematic communications systems via the Internet and about the most common computer tools, thereby increasing your technological abilities and broadening your training to help you when searching for work.

11

When we helped you to improve your job prospects



When you want to know more about the European Union



ESF

Support for the training of workers and of the unemployed members of the population

- ◇ Preparing you – through informal training courses to cover your occupational needs– when you are unemployed and trying to get into the job market.
- ◇ Helping with your continuous training through aid programmes for your company that generate qualified personnel and help workers to recycle themselves.

EC

Europe Direct Álava: European information office

- ◇ Helping you to find information on the European Union.
- ◇ Informing you on the daily operations of the European Union.
- ◇ Participating in the dissemination events organised by Europe Direct Álava.

ESF

Social/occupational integration of individuals with disabilities and those at risk of social exclusion

- ◇ Putting what really matters first: you. Strengthening your autonomy, integration and participation in society. Helping with training and undertaking social/occupational monitoring as well as social/occupational integration to the job market for those who are at risk of exclusion.



In conjunction with Álava County Council, with cooperation from Cáritas Álava, SARTU and Ireki Bideak - The Beti Gizartean Foundation.

Information to help you understand European project financing:

EC

European Commission

The executive body of the European Union that watches out for its general interest.

COHESION

Cohesion Fund

Designed for member states whose GNI (Gross National Income) per capita is less than 90 % of the average EU income. Its aim is to reduce socioeconomic disparity and promote sustainable development.

ERDF

European Regional Development Fund

Its aim is to strengthen socioeconomic cohesion within the European Union by correcting imbalances between regions.

ESF

European Social Fund

Europe's main tool for supporting job creation, helping people to find better jobs and ensuring fairer job opportunities for all EU citizens.

INTERREG

INTERREG

An initiative that aims to encourage cooperation between European Union regions. It began in 1989 and is funded by the European Regional Development Fund (ERDF).

LIFE
LIFE+

LIFE and LIFE+ Programme

The European Union's financial instrument dedicated to the environment. It funds projects that contribute toward developing and implementing environmental policy and legislation.

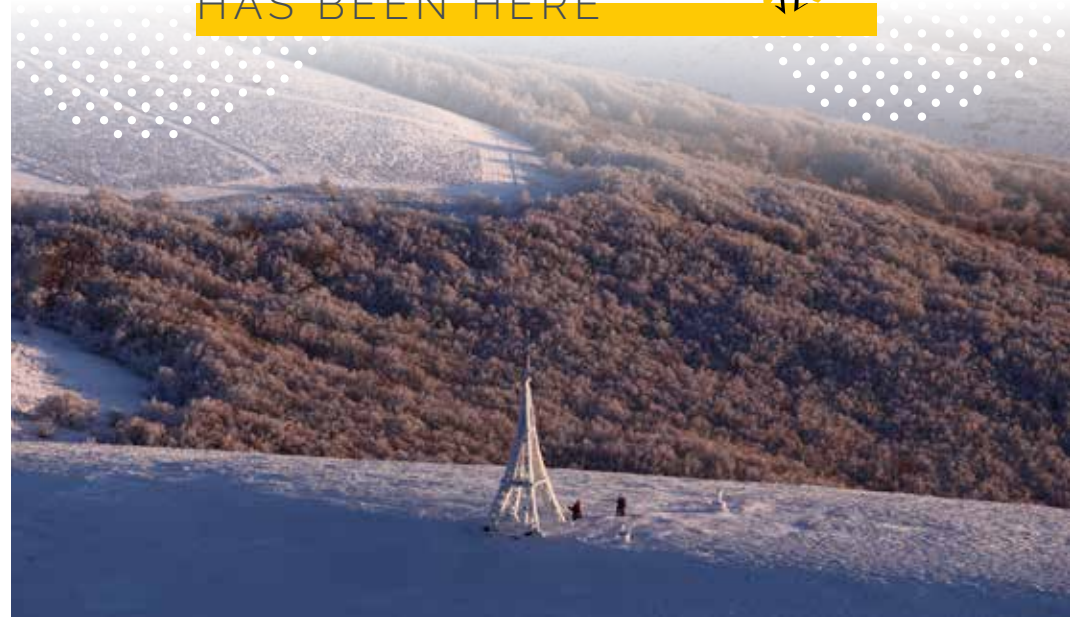
EUROPE

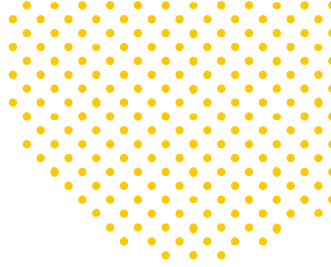
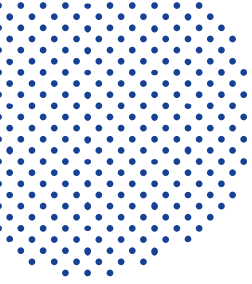
Supporting you
Accompanying you
Understanding you
Preparing you
Valuing
Helping
Joining together

Building
Protecting
Restoring
Contributing
Reconditioning
Cooperating
Answering



HAS BEEN HERE





Arabako Foru Aldundia
Diputación Foral de Álava

European Affairs Service
asuntoseuropeos2@araba.eus

